



jordan fishwick

WILMSLOW
Central Place



Central Place, Wilmslow, SK9 1BU

£1,200 PCM



The Property

AVAILABLE END MARCH FURNISHED - VIEWING ESSENTIAL TO APPRECIATE THE HIGH STANDARD

Not your average one bedroom apartment !!

Located on the ground floor in this extremely popular development is this one bedroom apartment. Benefiting from an extremely spacious interior and secure underground parking this property is ideal for the single professional or couple. Only a stones throw from the train station and town centre. and presented in excellent order. Open plan lounge dining kitchen with electric hob and oven, dishwasher, microwave and fridge and freezer, spacious double bedroom with fitted wardrobes, modern bathroom with shower over bath, good sized storage with washer dryer.

Contact Wilmslow 01625 536300 £1200.00pcm

COUNCIL TAX C

EPC C

Directions

SK9 1BU



- GROUND FLOOR APARTMENT
- ONE BEDROOM
- CENTRAL LOCATION
- SECURE UNDERGROUND PARKING
- SPACIOUS INTERIOR
- COUNCIL TAX C
- EPC C

Postcode - SK9 1BU

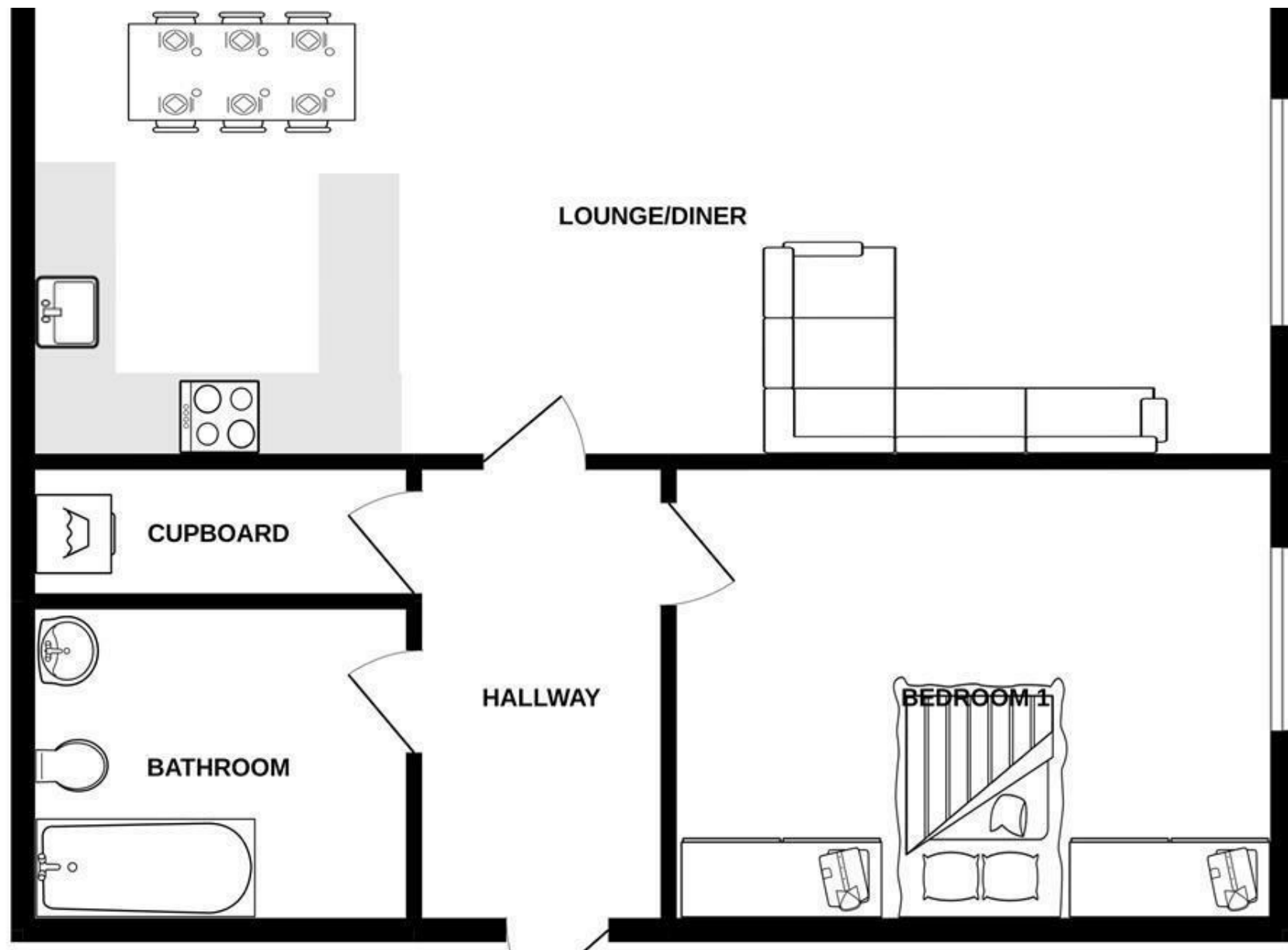
EPC Rating - C

Floor Area - sq ft

Local Authority - Cheshire East

Council Tax - C





These particulars are believed to be accurate but they are not guaranteed and do not form a contract. Neither Jordan Fishwick nor the vendor or lessor accept any responsibility in respect of these particulars, which are not intended to be statements or representations of fact and any intending purchaser or lessee must satisfy himself by inspection or otherwise as to the correctness of each of the statements contained in these particulars. Any floorplans on this brochure are for illustrative purposes only and are not necessarily to scale.

Offices at: Chorlton, Didsbury, Disley, Hale, Glossop, Macclesfield, Manchester Deansgate, Manchester Whitworth Street, New Mills, Sale, Wilmslow and Withington

01625 536300